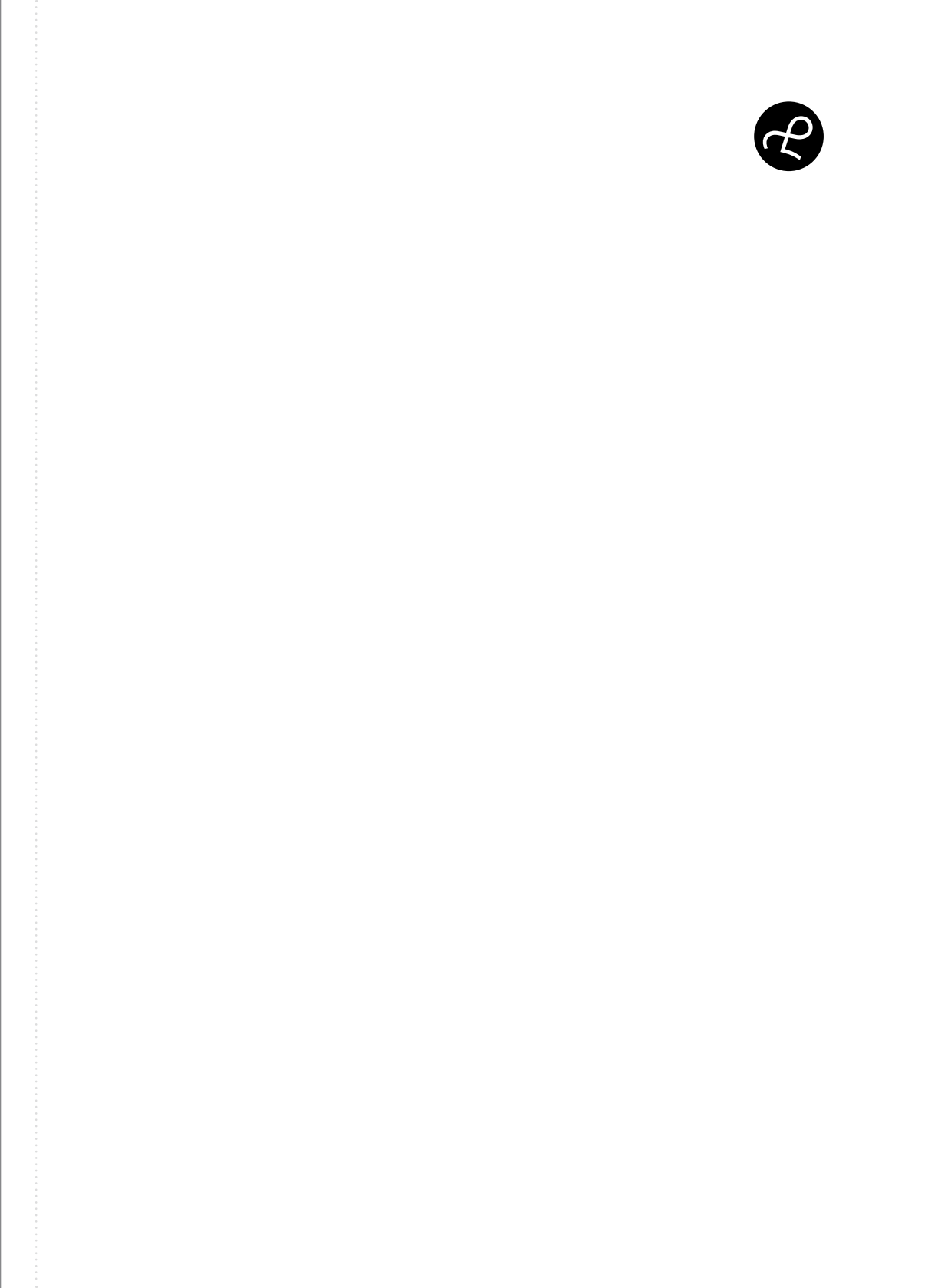
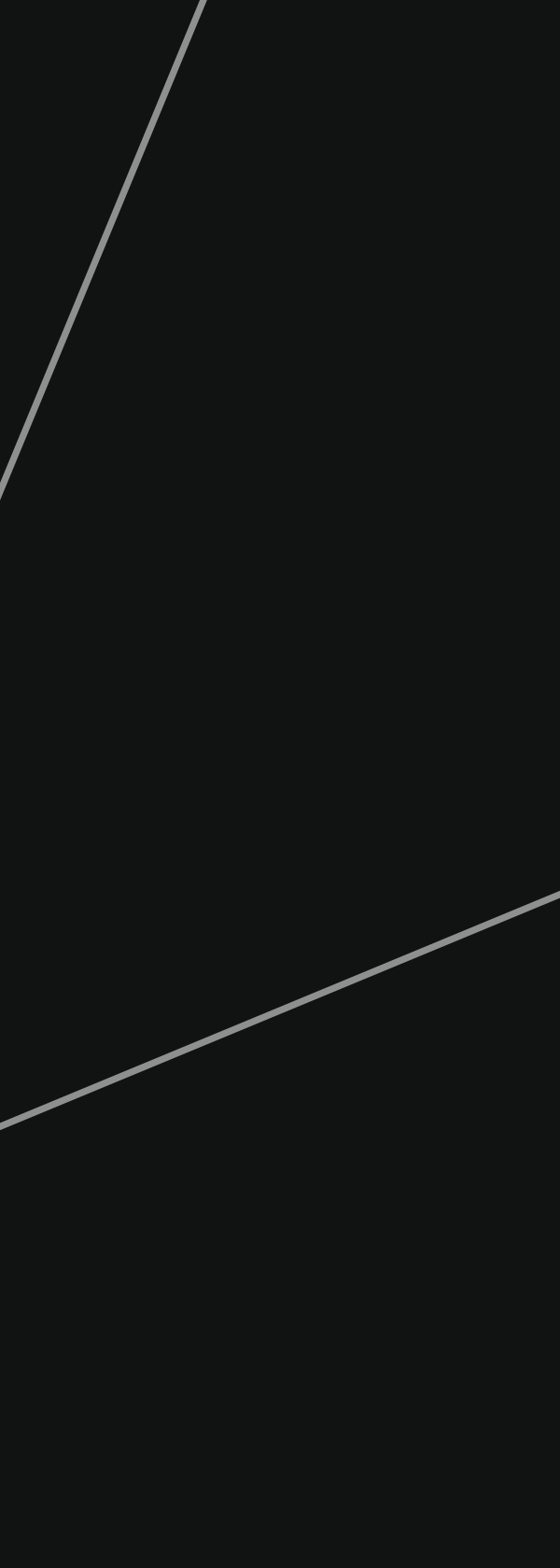




LASVIT  
VIA LUCIS  
MILAN DESIGN  
WEEK 2016

12 — 17 / 4 / 2016



**Lasvit is a manufacturer of unique works of glass, including bespoke lighting installations, glass art works, and award-winning collections.**



**LASVIT**  
**VIA LUCIS**  
**MILAN DESIGN**  
**WEEK 2016**

12 — 17 / 4 / 2016

**LASVIT**  
**VIA LUCIS**

**Atelier Oi / Jakub Berdych / Campana Brothers**  
**André Fu Living / Maurizio Galante / Jan Kaplicky**  
**Boris Klimek / Petra Krausova & Libor Sostak**  
**Arik Levy / Stanislav Libensky / Daniel Libeskind**  
**Michaela Mertlova / Raja Schwahn-Reichmann**  
**Patricia Urquiola / Maxim Velcovsky**  
**Moritz Waldemeyer**

**12—17 / 4 / 2016**  
**Milan Design Week**  
**Palazzo Serbelloni**  
**Corso Venezia 16, Milan**

## LIGHTING COLLECTIONS 2016



TAC/TILE  
by André Fu Living  
10



FACET  
by Moritz Waldemeyer  
14



STAIRS  
by Atelier Oi  
18



Lollipop  
by Boris Klimek  
20



Empress  
by Jakub Berdych  
24



Praha  
by Stanislav Libesky  
26



Ludwig  
by Maurizio Galante  
30

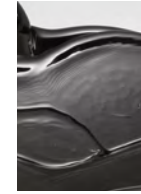


Memento Mori  
by Maxim Velcovsky  
34



Omnia Vincit Amor  
by Raja Schwahn-  
Reichmann  
38

## GLASSWARE COLLECTIONS 2016



Frozen Bowl  
and Cooler by  
Maxim Velcovsky  
42



Candy  
by Campana  
Brothers  
46



ICE Vases  
by Daniel  
Libeskind  
52



Champagne  
Cooler  
by Jan Kaplicky  
54



Crystal Rock  
by Arik Levy  
56



Born Broken  
by Jakub Berdych  
60



Munchies  
by Michaela Mertlova  
62



Radiant  
by Patricia Urquiola  
64

## DYNAMIC LIGHTING SCULPTURE



Intergalactic  
by Petra Krausova  
and Libor Sostak  
68



LIGHTING  
COLLECTIONS  
2016

# TAC/TILE BY ANDRÉ FU LIVING

Celebrating Fu's signature language of 'relaxed luxury,' this collection is an ode to a truly tactile material that embodies religious, institutional and monumental architecture. It was inspired by the 1932 Maison de Verre (a.k.a. House of Glass), Czech metropolitan passageways, traditional Chinese tiled roofs, the Flatiron Building, as well as modernist glass blocks. The purist triangular profile became the core form adapted into a spectrum of applications – from table lamps, floor lamps and reading lamps to suspended pendants.

Pendant horizontal  
Dimensions / W 986 × H 138 + L mm  
Light source / LED tube T8 ICD, 3000K  
Weight / 30 kg  
Primary material / cast glass  
Colour / clear

Pendant vertical  
Dimensions / W 305 × 189 + L mm  
Light source / LED tube T8 ICD, 3000K  
Weight / 30 kg  
Primary material / fused glass  
Colour / clear

Floor lamp  
Dimensions / W 500 × 240 × H 1400 mm  
Light source / LED strip, 3000K  
Weight / 22 kg  
Primary material / cast glass  
Colour / clear

Table lamp large  
Dimensions / W 394 × 318 × H 1400 mm  
Light source / LED strip, 3000K  
Weight / 30 kg  
Primary material / cast glass  
Colour / clear

Table lamp small  
Dimensions / W 294 × 246 × H 655 mm  
Light Source / LED strip, 3000K  
Weight / 15kg  
Primary material / cast glass  
Colour / clear

Table lamp vertical  
Dimensions / W 350 × 228 × H 390 mm  
Light Source / LED strip, 3000K  
Weight / 10 kg  
Primary material / cast glass  
Colour / clear

André Fu is Hong Kong based interior designer. He was educated in the United Kingdom and gained international acclaim for his design of The Upperhouse luxury hotel. His boutique studio created a series of internationally-recognized works in sensuous and unique projects.

Fu's approach to interior architecture combines the rigorous pursuit of new Asian sensitivities, with clarity in space planning and keen attention to the details of everyday life. His new AFL brand plans to expand into different areas of lifestyle, including a home fragrance.







# FACET BY MORITZ WALDEMEYER

As if trying to systematize the chandelier-making tradition, Moritz Waldemeyer took the geometrical shape of the Classic chandelier outline and turned it into a diamond-like hexagonal glass unit. On its own, with just a single pendant, or in combination of multiple items into a large chandelier, the FACET components stand out as clear, disciplined and geometrical. The light source included inside every pendant allows the FACET to be universal and almost unlimitedly extendable.

---

Dimensions / Dia 1200 x H 1200 mm  
Light Source / G4, 3000K  
Weight / 70 kg  
Primary material / hand-blown clear glass  
Colour / clear

Moritz Waldemeyer is an internationally renowned designer based in London. His work occupies a diverse range of creative spaces, from art and product design to fashion and entertainment. Studio Moritz Waldemeyer is renowned for its forward thinking and playful

experimentation, forging links between technology, art, fashion and design. Waldemeyer's interest in light and its implementation also results in bespoke light-studded costumes for Will.I.AM, Rihanna, Take That and the 2012 London Olympics handover Ceremony performers.





# STAIRS BY ATELIER OI

Using the flexibility of Lasvit's know-how in glass blowing and bronze casting, the designers ventured into the realm of Czech Art Deco inspirations and transformed a 1930's aesthetic into contemporary context. The metal base with a step-profile enables various positions of the glass in different shapes and sizes. This multi-layered concept is further enhanced by different finishes and colors for varying light effects. The inner metal tripod structure takes its inspiration from Art Deco shapes while clearly exposing its function.

---

## Pendant I

Dimensions / Dia 500 × H 395 + L mm

Light Source / E27, 3000K

Weight / 12 kg

Primary material / hand-blown clear glass

Colour / clear, amber

## Pendant II

Dimensions / Dia 500 × H 300 + L mm

Light Source / E27, 3000K

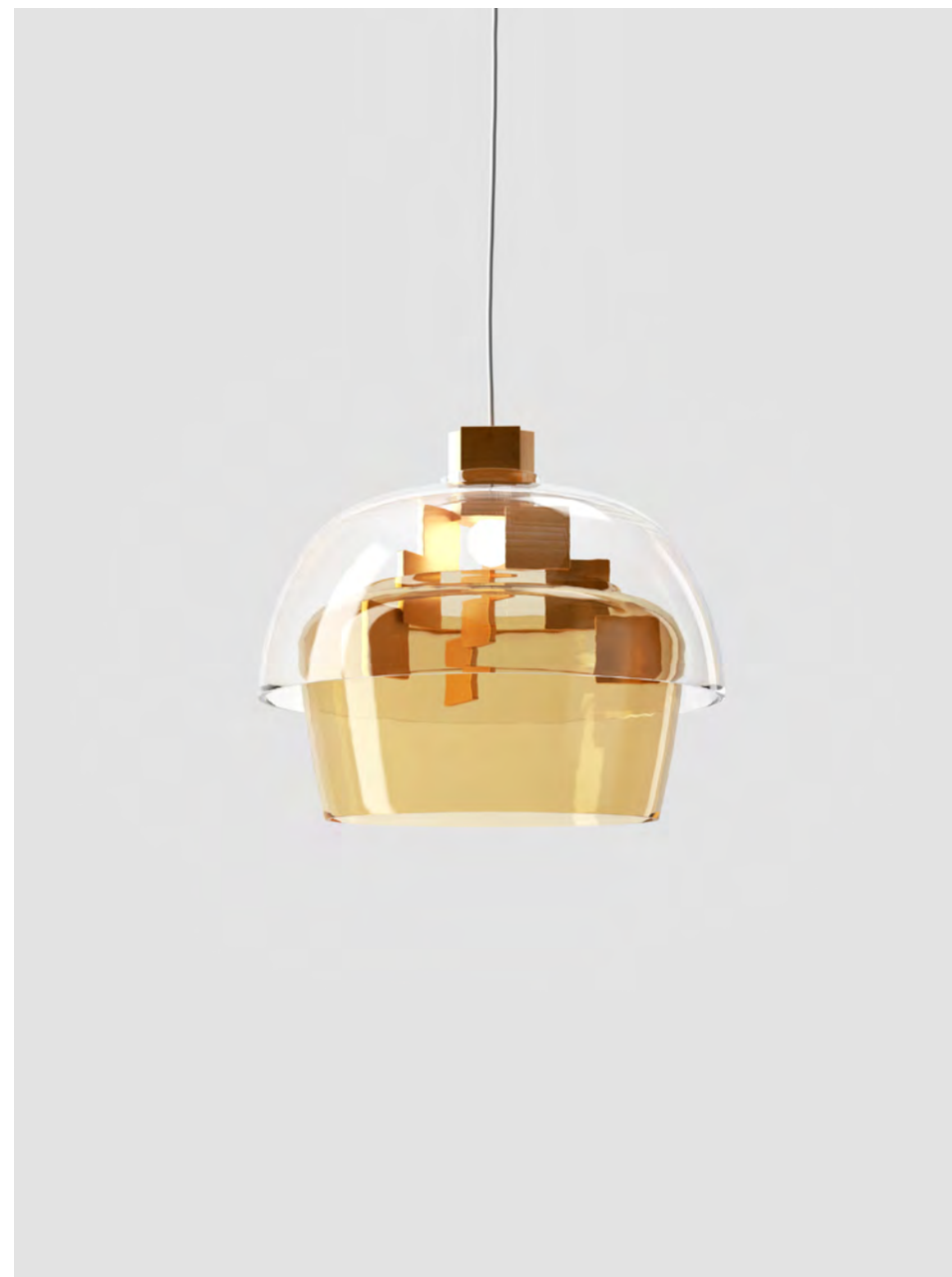
Weight / 11 kg

Primary material / hand-blown clear glass

Colour / clear, amber

Founded in La Neuveville, Switzerland, in 1991 by Aurel Aebi, Armand Louis and Patrick Reymond, atelier oi has been striving for over 20 years to dissolve barriers between genres and foster cross-disciplinary creativity. During those two decades, their architecture, design and set-design have

intertwined on an international scale. Their projects have been recognized world-wide and they worked with clients such as Artemide, B&B Italia, Bulgari, Danese, Triade, Foscarini, Louis Vuitton, Moroso, Pringle of Scotland, USM, Zanotta and Parachilna.



# LOLLIPOP BY BORIS KLIMEK

Ever peered into the sun through a green glass bottle? Or enjoyed a slightly distorted reality through a colored lens? The Lollipop collection is based on similar moments of fascination with transparency and perception. Lasvit designer Boris Klimek experimented with the technique of slumped glass, exploring its wide possibilities in terms of glass coloring, glint and internal structure. Made of amorphous glass plates, combined with the metal holder and inserted light source, the resulting objects are reminiscent of lollipops. The Lollipop collection consists of table and floor lamps, as well as pendant lights.

Pendant I  
Dimensions / Dia 450 × H 840 + L mm  
Light Source / G9 LED, 3000K  
Weight / 12 kg  
Primary material / fused glass  
Colour / clear, pink, orange, violet, turquoise blue

Pendant II  
Dimensions / Dia 490 × H 750 + L mm  
Light Source / G9 LED, 3000K  
Weight / 10 kg  
Primary material / fused glass  
Colour / clear, pink, orange, violet, turquoise blue

Pendant III  
Dimensions / Dia 650 × H 730 + L mm  
Light Source / G9 LED, 3000K  
Weight / 10 kg  
Primary material / fused glass  
Colour / clear, pink, orange, violet, turquoise blue

Pendant IV  
Dimensions / Dia 400 × H 670 + L mm  
Light Source / G9 LED, 3000K  
Weight / 8 kg  
Primary material / fused glass  
Colour / clear, pink, orange, violet, turquoise blue

Floor lamp I  
Dimensions / Dia 488 × H 1472 mm  
Light Source / G9 LED, 3000K  
Weight / 15 kg  
Primary material / fused glass  
Colour / clear, pink, orange, violet, turquoise blue

Floor lamp II  
Dimensions / Dia 450 × H 1240 mm  
Light Source / G9 LED, 3000K  
Weight / 15 kg  
Primary material / fused glass  
Colour / clear, pink, orange, violet, turquoise blue

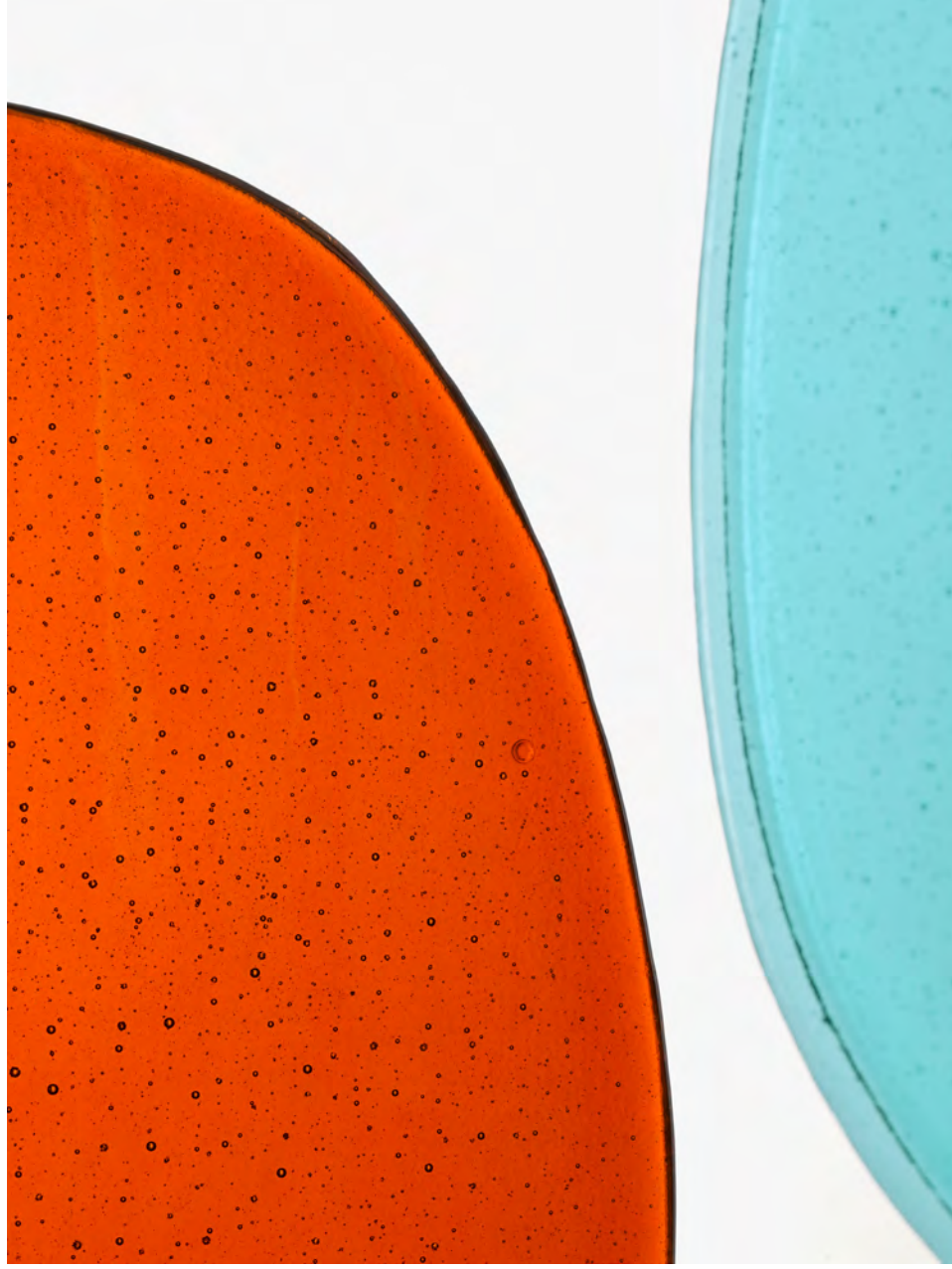
Table lamp I  
Dimensions / Dia 335 × H 620 mm  
Light Source / G9 LED, 3000K  
Weight / 8 kg  
Primary material / fused glass  
Colour / clear, pink, orange, violet, turquoise blue

Table lamp II  
Dimensions / Dia 480 × H 540 mm  
Light Source / G9 LED, 3000K  
Weight / 7 kg  
Primary material / fused glass  
Colour / clear, pink, orange, violet, turquoise blue

Boris Klimek studied at the Zlin Atelier of the Academy of Arts Architecture and Design in Prague. He received numerous prizes for his work and is currently based in Prague, where he focuses on product and interior design, as well as exhibition displays. His designs entail conceptual

overlaps and often carry stories. Klimek's designs aim at both function and beauty – particularly through their poetry, playfulness and ability to spark fantasy and emotion.





# EMPRESS BY JAKUB BERDYCH

Inspired by the traditional shape of chandeliers popular during the reign of Empress Maria Theresa, this contemporary reflection on the iconic style brings refreshing new details. The production of its individual trimmings is stopped prior to their final cutting and polishing, showing the pressed glass including its overburden edge.

This effect captures the sense of glass being exposed to heat and pressure, sustaining a sense of motion. The impression is further enhanced by using the technique of metal-coating of glass that adds depth, sheen and iridescence. The Empress chandelier is an example of excellent craftsmanship in combination with the raw sense of the unfinished trimming.

Chandelier Large  
Dimensions / Dia 1320 × H 1940 mm  
Light Source / 48 × E14, 3000K  
Weight / 170 kg  
Primary material / pressed glass  
Colour / soft coating on glass-cooper,  
soft coating on glass-dark violet

Chandelier Small  
Dimensions / Dia 790 × H 1100 mm  
Light Source / 40 × E14, 3000K  
Weight / 100 kg  
Primary material / pressed glass  
Colour / soft coating on glass-dark violet,  
soft coating on glass-cooper

Jakub Berdych is a co-founder of the Qubus Design Studio focusing primarily on conceptual work in traditional Czech materials such as glass and porcelain. His work spans products and comprehensive collections known both locally and abroad, including the reconstruction of interior church St. Bartholomew in Chodovice, installations in the Moss Gallery in New York

and London Mint Gallery. In addition to conceptual and product design, Berdych focuses on implementations in the field of interior architecture and fine arts. He is the artistic director of the Gallery Store Dox by Qubus, located in the premises of the contemporary art gallery Dox in Prague and offering a distinct selection of design and applied arts.



# PRAHA BY STANISLAV LIBENSKY

Lasvit is proud to present a set of original pendants by Stanislav Libensky. They were designed for and installed in the Hotel Praha, a prominent architectural project completed during the 1980's. Although representing the best of contemporary design, the hotel was later torn down on the premise of being "too large to operate". Civic efforts to preserve it as a cultural monument failed and these lights are among the few remaining artefacts.

Libensky used varying thicknesses of glass to create a play of rays and shadows on the fixtures themselves as well as their surrounding interiors. Natural light creates a positive/negative image pattern directly on the glass. Amassing fixtures in a variety of shapes and heights enables diverse effects, from a fireball look to more delicate forms resembling a kaleidoscope. These distinctive features, as well as their variability of use, make the Praha lights a timeless design. Following the Milan expo, these lights will be included in the Lasvit Collections and reproduced using the original techniques.

Dimensions / Dia 120 × H 2200 mm  
Light Source / 21 × E27, 3000K  
Weight / 200 kg  
Primary material / hand-blown clear glass  
Colour / clear

Together with his wife and lifelong collaborator, Jaroslava Brychtova, Stanislav Libensky (1921–2002) belonged among the pioneers of modern glass. The artistic partnership that lasted nearly 50 years produced some of the most defining cast sculptures and architectural installations of the 20<sup>th</sup> century. Their monumental works helped elevate glass into a recognized art form, particularly with their Expo '58 installation that won

the 1958 Grand Prize in Brussels. Libensky explored the optical and physical aspects of glass from his background as a painter, complementing his wife's sculptural approach. He later developed interesting collaborations with architects, including a stained-glass window for Prague's St. Vitus Cathedral. His extensive teaching career helped form the current generation of glass artists both in the Czech Republic and abroad.







Archive image – original installation in the Hotel Praha

# LUDWIG BY MAURIZIO GALANTE

The design of the Ludwig chandelier strives to establish a balance between past and future. A bygone romantic era with its neoclassical proportions is reinterpreted with essentially slick, streamlined forms. While the contours remain loyal to their neoclassical style chandelier references, the use of industrial glass tubes imbues this family of spectacular lights with an airy and strikingly modern elegance.

---

Chandelier Large  
Dimensions / Dia 1364 x H 1306 mm  
Light Source / 165 x G9, 3000K  
Weight / 220 kg  
Primary material / technical clear glass  
Colour / clear

Chandelier Small  
Dimensions / Dia 900 x H 800 mm  
Light Source / 80 x G9, 3000K  
Weight / 100 kg  
Primary material / technical clear glass  
Colour / clear

Maurizio Galante is one of the world's most respected haute couture fashion designers. His distinctive language is particularly valuable in contemporary high fashion and his creations are executed with a profound respect for traditional craftsmanship. They poetically combine an

architect's in-depth knowledge with the fine workmanship of the French Haute Couture atelier and the impeccable skills of Italian manufacturing. He first teamed up with Lasvit glassmakers in 2013 to express his artistic visions in glass.





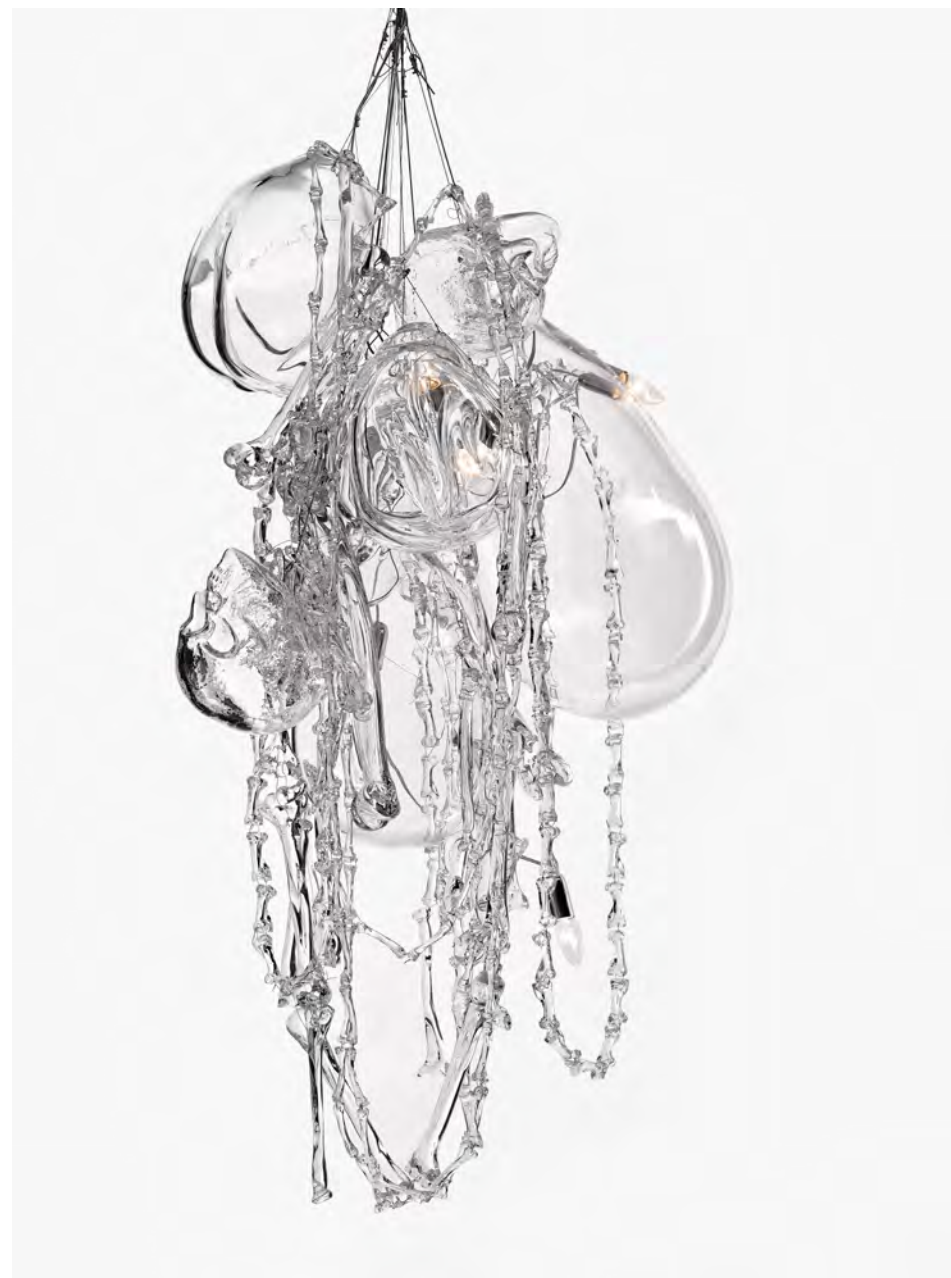
# MEMENTO MORI BY MAXIM VELCOVSKY

The macabre Czech masterpiece known as the Sedlec Ossuary (near Kutna Hora) is one of twelve World Heritage Sites in the Czech Republic. It is estimated to contain the skeletons of between 40,000 and 70,000 people, whose bones were artistically arranged by Frantisek Rint to form chapel decorations in 1870. Maxim Velcovsky pays homage to Rint's actual bone chandeliers by imprinting their shapes into a glass form. The Latin phrase Memento Mori, reminding us to 'remember death,' became the essence of this object. It symbolizes birth and death as well as the disappearing crafts that are passed from generation to generation in Europe. Small parts are made by glass pressing, large parts are hand-blown and the chains created by small "bones" paraphrasing the "immortal" classical chandeliers.

Dimensions / Dia 1100 × H 1500 mm  
Light Source / 30 × G4, 3000K  
Weight / 150 kg  
Primary material / hand-blown clear glass  
Colour / clear

Maxim Velcovsky completed his studies at the Academy of Arts, Architecture and Design in Prague. In 2002 he became co-founder of the Qubus design studio. He participated in over ninety joint exhibitions and his works are included in the collections of the Victoria & Albert Museum in London, The New Pinakothek in Munich,

the Museum of Art and Design in Prague and the Design Museum in Lausanne. In 2007 he won the Czech Designer of the Year award. In 2011 Velcovsky became Art Director of Lasvit, while also heading the Ceramics and Porcelain Atelier of the Academy of Arts, Architecture and Design in Prague.





# OMNIA VINCIT AMOR BY RAJA SCHWAHN-REICHMANN

Love conquers all. Dionysus, the leader and rioter of all the baroque bucolic bustle, accompanied by Cupid and his divine relatives and ambassadors, protects us against melancholy as bearer of wine, lust(re) and light. Inspired by this theme, artist Raja Schwahn-Reichmann set out to transform her visions, using her figural paintings, into three-dimensional objects. The collection titled Omnia Vincit Amort for Lasvit combines Raja's paintings and hand-blown glass components. This meticulously crafted piece bursts with colors and shapes, adding a contemporary twist to the baroque icons and floral elements.

Pendant  
Dimensions / Dia 1400 × H 1900 mm  
Light Source / 30 × E14, 3000K  
Weight / 100 kg  
Primary material / wood  
Colour / multicolour

Floor lamp  
Dimensions / W 800 × L 800 × H 600 mm  
Light Source / 5 × E14, 3000K  
Weight / 45 kg  
Primary material / wood  
Colour / multicolour

Table lamp I  
Dimensions / Dia 600 mm  
Light Source / 6 × E14, 3000K  
Weight / 250 kg  
Primary material / wood  
Colour / multicolour

Table lamp II  
Dimensions / Dia 600 mm  
Light Source / 6 × G4, 3000K  
Weight / 250 kg  
Primary material / wood  
Colour / multicolour

Mirror  
Dimensions / Dia 1200 × H 2000 mm  
Light Source / no  
Weight / 25 kg  
Primary material / wood and mirror glass  
Colour / mirror clear

Viennese artist Raja Schwahn-Reichmann studied at the Academy of Fine Arts, graphic, conservation and technology, learning all traditional art techniques and crafts. She focuses on costume history, the conservation of paper, paintings and ethnological objects as well as

architecture and monument protection, which she also taught. Her special artistic interest lies in baroque interiors, Chantourné painting and the connection between painting and architecture. She is known for her unusual exhibitions, Dionysus feasts and activism in protecting historic gardens.



**GLASSWARE  
COLLECTIONS  
2016**

# FROZEN BOWL AND COOLER BY MAXIM VELCOVSKY

The Frozen collection was inspired by the transformation of water into ice. This moment is similar to work in a glassmaker shop. Velcovsky allows the glass to spill over a metal form and seeks advantage in its natural properties. Each piece traces a unique record of the process, becoming an original. Velcovsky found inspiration among pieces of ice created by nature and applied that element of randomness in nature to his craft in the context of glassmaking. Glassmakers understand their material always 'freezes' at some moment in the process and only the most skilled hands are capable of creating a unique form. This concept now translates into unique Frozen bowls and champagne coolers.

---

Frozen Bowl  
Dimensions / Dia 400 × H 200 mm  
Primary material / hand-blown glass  
Colour / clear, alexandrit, uranium

Cooler  
Dimensions / Dia 350 mm × L 450 mm  
Primary material / hand-blown glass  
Colour / clear, smoke, amber

Maxim Velcovsky completed his studies at the Academy of Arts, Architecture and Design in Prague. In 2002 he became co-founder of the Qubus design studio. He participated in over ninety joint exhibitions and his works are included in the collections of the Victoria & Albert Museum in London, The New Pinakothek in Munich,

the Museum of Art and Design in Prague and the Design Museum in Lausanne. In 2007 he won the Czech Designer of the Year award. In 2011 Velcovsky became Art Director of Lasvit, while also heading the Ceramics and Porcelain Atelier of the Academy of Arts, Architecture and Design in Prague.







# CANDY BY CAMPANA BROTHERS

The Candy Collection tableware now complements existing lighting sculptures created by Campana Brothers in collaboration with Lasvit master glassmakers.

Inspired by popular candies found in Brazilian markets, the Candy Collection combines playful colours and patterns of South America with traditional Bohemian craftsmanship.

---

Vase I  
Dimensions / Dia 120 × H 450 mm  
Primary material / hand-blown glass  
Colour / clear, opal, colour strings

Vase II  
Dimensions / Dia 150 × H 350 mm  
Primary material / hand-blown glass  
Colour / clear, opal, colour strings

Carafe  
Dimensions / Dia 140 × H 310 mm  
Primary material / hand-blown glass  
Colour / clear, colour strings

Cheese lid  
Dimensions / Dia 390 × H 340 mm  
Primary material / hand-blown glass  
Colour / clear, colour strings

Glass  
Dimensions / 550 ml  
Primary material / hand-blown glass  
Colour / clear, colour strings

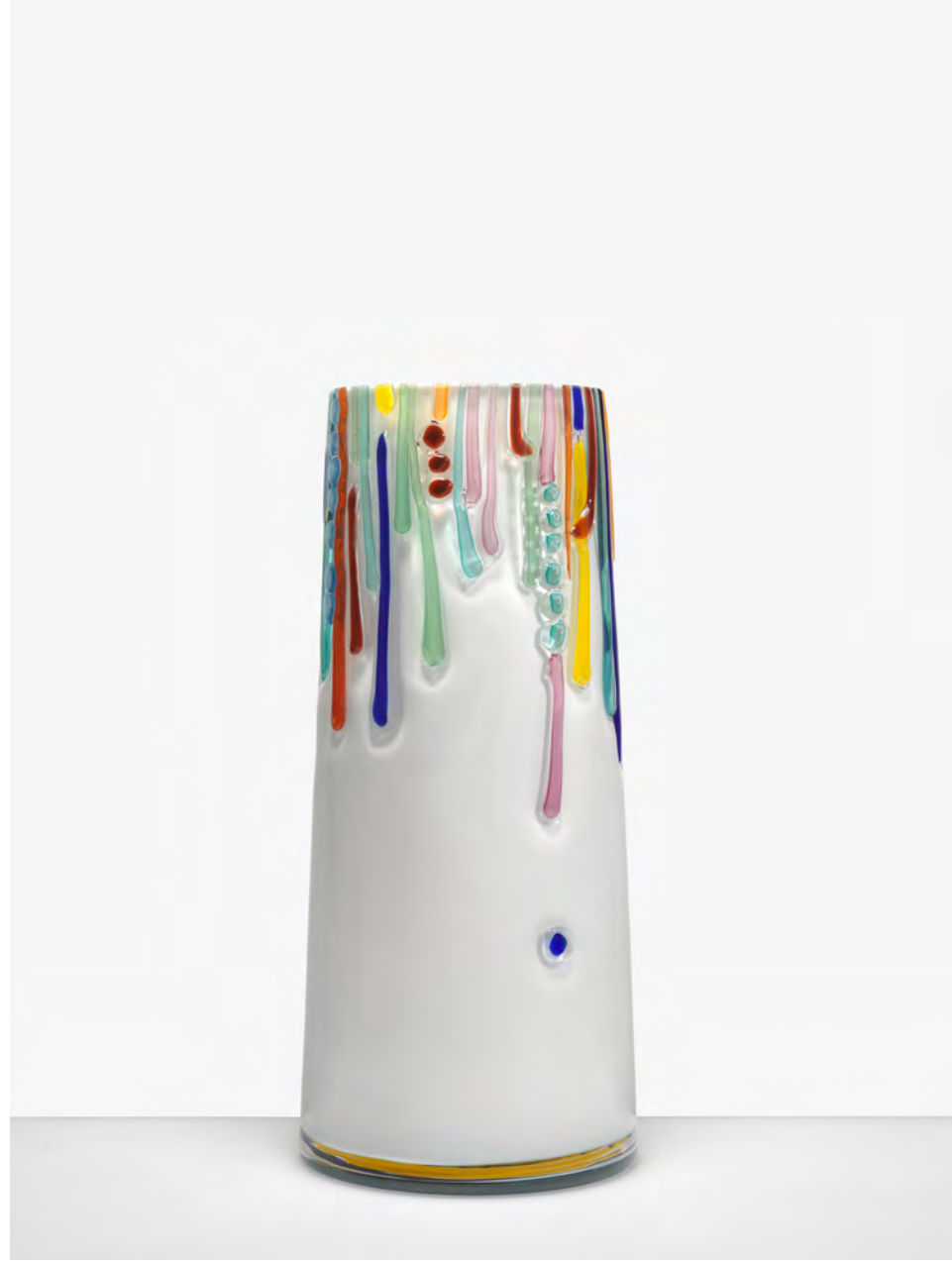
Whiskey glass  
Dimensions / 280 ml  
Primary material / hand-blown glass  
Colour / clear, colour strings

The Campana Brothers, Fernando and Humberto, are Brazilian designers who teamed up in 1983 to make unique furniture using diverse materials, including recycled products and plush toys. Their work incorporates the theme of transformation and reinvention. From 1997, their

furniture began to be produced and sold in Italy. In 1998 they became the first Brazilian artists to exhibit their work at The Museum of Modern Art in New York, achieving international recognition. Currently they are represented in galleries in New York, London, Paris and Rome.







# ICE VASES BY DANIEL LIBESKIND

These vases expand a design concept Daniel Libeskind developed for ICE lighting sculpture, being built on the same bold, geometric structure combined with the delicate and fluid quality of hand-blown glass. The vases are blown into angular molds and, when clustered together, create a series of puzzle-like patterns. Effective as both stand-alone pieces and as a group, the ICE vases highlight the qualities of hand-made glass through their simple elegance.

An international architect and designer, Daniel Libeskind, linking the emotion of architecture to involve philosophy, art, literature and music. He embraces the notion that buildings are crafted with perceptible human energy, addressing the greater cultural context in which they are built. Daniel Libeskind established his architectural studio in Berlin, Germany in 1989. His buildings include

the Jewish Museum in Berlin, the Royal Ontario Museum in Toronto, the Grand Canal Theatre in Dublin among many others. Libeskind's work has been exhibited in major museums and galleries around the world. In February 2003, Daniel Libeskind was selected as the master planner for the World Trade Center redevelopment.



ICE design concept

# CHAMPAGNE COOLER BY JAN KAPLICKY

“The priority is elegance”, said Jan Kaplicky while maintaining that he sees design merely as small elements of architecture. This champagne bucket carries his classic elegance, organic curves as well as hint of his futuristic tendencies. Lasvit is proud to include this timeless piece in our Collections, execute it with world-class level of craftsmanship and pay homage to one of our greatest visionaries.

---

Dimensions / Dia 220 × L 440 mm  
Primary material / hand-blown glass  
Colour / clear, alexandrit, uran

Having escaped his native Czechoslovakia in 1968 after the Soviet invasion, Jan Kaplicky (1937–2009) became a world-renowned architect who spent a major part of his life in the United Kingdom. He was the leading architect behind the innovative Future Systems design studio that received two awards for architecture from the Royal Institute of British Architects, a World Architecture Award

and many other accolades. Among their iconic projects were the new media center at Lord's Cricket Ground and the Selfridges Building in Birmingham. After the Velvet Revolution, Kaplicky won a competition for the new building of the National Library in Prague, but the project was subsequently cancelled for political reasons.



# CRYSTAL ROCK BY ARIK LEVY

Following the success of his Crystal Rock pendant lights, Arik Levy extended this versatile design line with the Crystal Rock vases. Not from the Stone Age but closer to Kryptonite, Crystal Rock is created with a perfectly cut, yet roughly sculpted contemporary silex that highlights the interaction between light and darkness.

---

Vase Large  
Dimensions / Dia 230 × H 320 mm  
Primary material / hand-blown glass  
Colour / clear, red, blue, amber, opal

Vase Small  
Dimensions / Dia 120 × H 160 mm  
Primary material / hand-blown glass  
Colour / clear, red, blue, amber, opal



Arik Levy is an artist, technician, photographer, designer and filmmaker. Levy's skills are multi-disciplinary and his work can be seen in prestigious galleries and museums worldwide. Best known publicly for his sculptures – such as his signature Rock pieces – his installations, limited editions and design, Levy nevertheless feels that “the world is about people, not objects”.





# BORN BROKEN BY JAKUB BERDYCH

Inspired by the craft itself, these vases remind us of the otherwise unseen aspects of glass production – its errors. What would normally be considered an irreparable mistake caused by a clumsy glassblower, purposefully becomes the center of attention and a technical challenge. Each hand-blown shape is broken into several segments and their edges additionally hammered to create a pattern visually akin to cutting. The individual pieces are reheated and joined into one unit, creating a safe and compact surface, but retaining their intriguing random patterns.

---

Vase I  
Dimensions / Dia 110 × L 330 mm  
Primary material / hand-blown glass  
Colour / clear

Vase II  
Dimensions / Dia 290 × L 380 mm  
Primary material / hand-blown glass  
Colour / clear

Bowl  
Dimensions / Dia 250 × L 160 mm  
Primary material / hand-blown glass  
Colour / clear

Jakub Berdych is a co-founder of the Qubus Design Studio focusing primarily on conceptual work in traditional Czech materials such as glass and porcelain. His work spans products and comprehensive collections known both locally and abroad, including the reconstruction of interior church St. Bartholomew in Chodovice, installations in the Moss Gallery in New York and London Mint Gallery. In addition

to conceptual and product design, Berdych focuses on implementations in the field of interior architecture and fine arts. He is the artistic director of the Gallery Store Dox by Qubus, located in the premises of the contemporary art gallery Dox in Prague and offering a distinct selection of design and applied arts.



# MUNCHIES

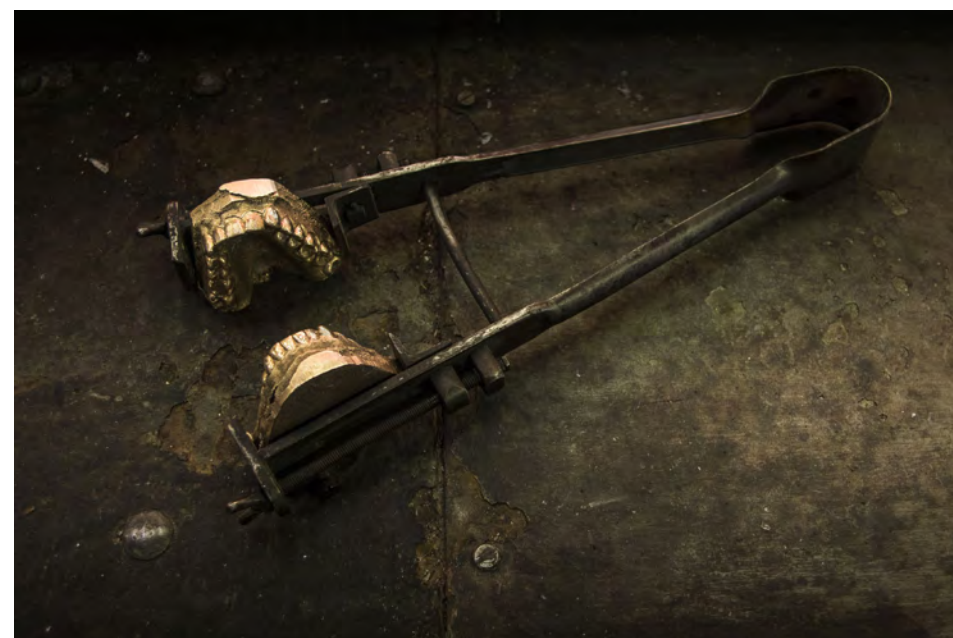
## BY MICHAELA MERTLOVA

This seemingly simple, but technically very challenging experimental collection was inspired by bubble-gum. The designer maintains, that bubble gums are fresh, youthful and filled with one's own breath, making them rather intimate, frivolous and even ultimately childish. Bubble gum is created not only by a glass-blowing technique, but also by pressing a metal casting of the artist's teeth into the molten glass to simulate an authentic effect. The entire collection, as well as its creative process, is a rare combination of artistic playfulness with master technique.

Dimensions / 50–200 mm  
Primary material / hand-blown glass  
Colour / green, pink, blue

Michaela Mertlova is a young Czech designer who studied at the Glass Atelier of Academy of Arts, Architecture and Design in Prague. She studied further abroad in the Product Design Atelier in Rotterdam. Her thesis work, Munchies, won the Stanislav Libensky Award and in 2014 she was nominated for the Czech Grand Design Award

as its Discovery of the Year. Together with the Psychognis, which she co-founded, she won the first prize for a collection and installation at the Prague Design Week 2014. Mertlova participated in local and international exhibitions, including Milan, Basel, Hamburg, Brussels and Munich, as well as Dox and the National Gallery in Prague.



# RADIANT BY PATRICIA URQUIOLA

Patricia Urquiola explored Lasvit's glassmaking skills and the myriad possibilities offered by glass-cutting. Radiant is a striking vase with an intricate design combining blown glass and milling cuts. The heavy glass vase showcases designer sensitivity and brand expertise.

---

Dimensions / Dia 220 x L 270 mm  
Primary material / hand-blown glass  
Colour / clear

Patricia Urquiola was born in Oviedo, Spain and now lives and works in Milan. She attended the faculty of architecture of the Madrid Polytechnic and the Milan, Polytechnic graduating with Achille Castiglioni. Prior to opening her own studio in Milan, she collaborated with Achille Castiglioni, Vico Magistretti and Piero Lissoni, working on product design, architecture, interiors,

installations and concept creation. She received many awards including the Gold Medal of Fine Arts and the Cross of the Order of Isabella the Catholic from the Spanish Government and King of Spain. Her products are present in the permanent collection of various museums among others MoMA NY and Triennale Milano.



**DYNAMIC  
LIGHTING  
SCULPTURE**

# INTERGALACTIC BY PETRA KRAUSOVA AND LIBOR SOSTAK

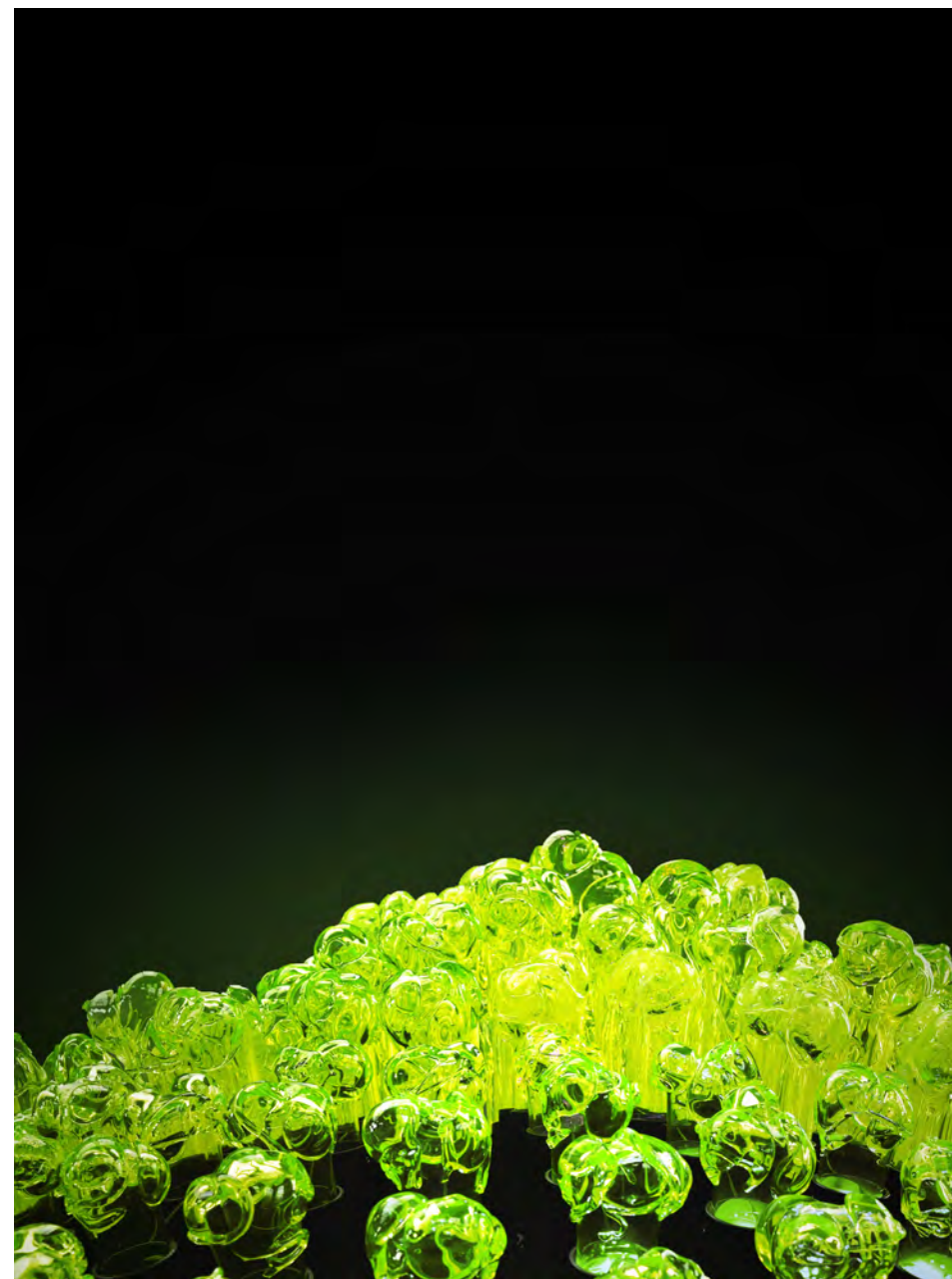
The Ries Crater was formed some 14 million years ago by an asteroid impact. The force of its subsequent explosion sent molten rocks up to 300 km away, forming green “cosmic glass” in the process. Today, pieces of this natural glass, called Moldavite, are found almost exclusively in the Czech Republic.

Lasvit designers Petra Krausova and Libor Sostak were inspired by this semi-precious stone, and created their homage to Moldavites. This dynamic glass sculpture is made of bright green uranium glass, pulsing with changing light like an asteroid entering the atmosphere. Its spherical black metal base is covered with more than 1500 hand-blown glass elements, individually lit with LED lights. The lighting is programmed to 7 different modes and effects that can be controlled using a phone or tablet application. The Intergalactic blends ancient history and nature with inventive design, fine craftsmanship and modern technology.

Dimensions / dia 3300 mm  
Light Source / 1556 × RGB LED 1,2W  
Weight / approx. 3000 kg  
Primary material / hand-blown uranium glass, stainless steel  
Colour / uranium green, matt black

Petra Krausova searches for her inspiration in materials and technology as well as in the seemingly opposing topics of tradition and futurism. This Lasvit designer and co-founder of the new lifestyle brand, Newintage, focuses mainly on the design of furniture, products and futuristic concepts. Apart from stories and, at first sight, hidden

ambiguities, her experience working for major designers and architects such as Tord Boontje, Michael Sodeau, Eva Jiricna and Bang&Olufsen is also reflected in her creations.

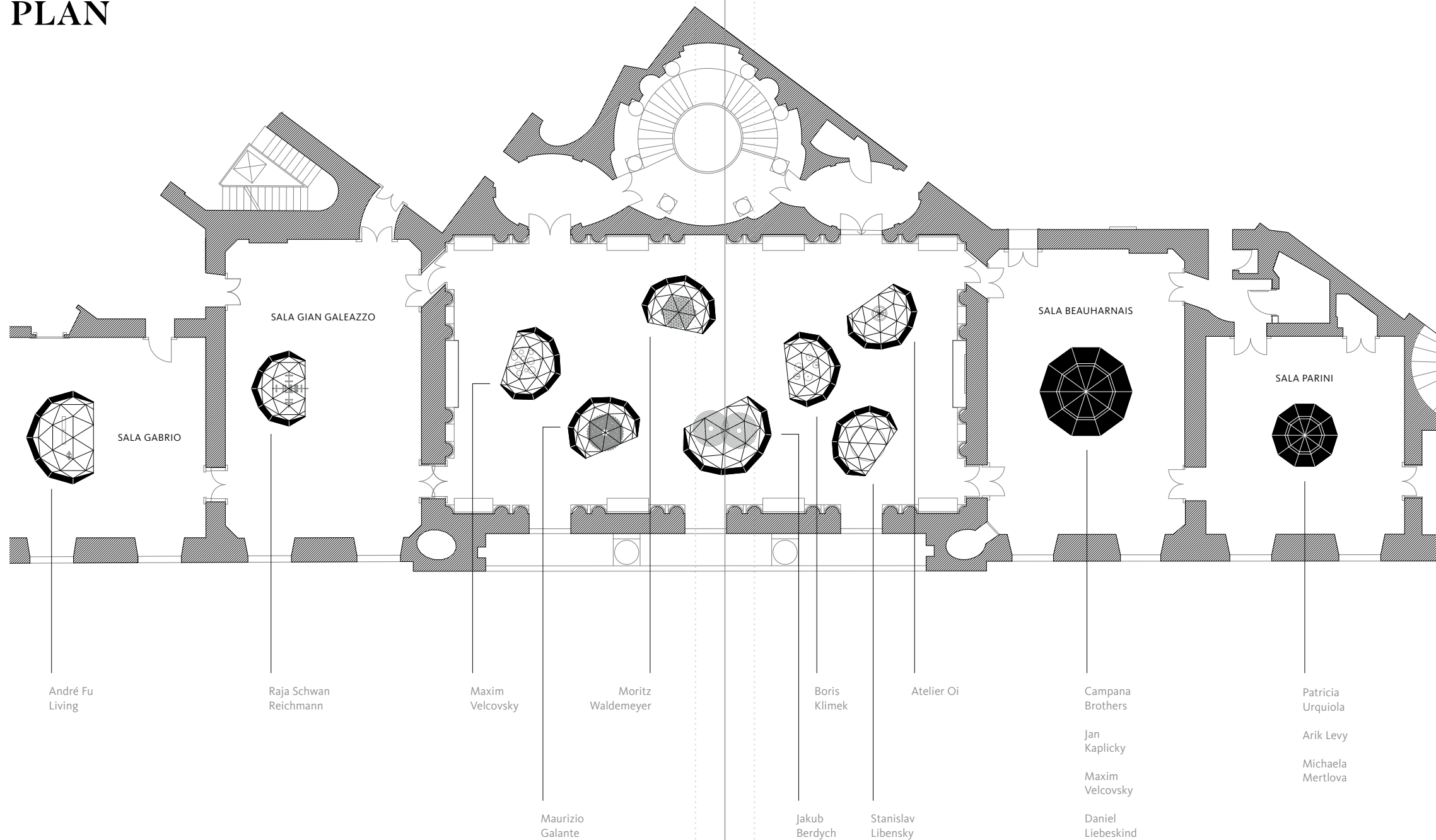


Libor Sostak is a Czech born product designer who studied design at the Academy of Art and Architecture. He also gained product design experience in Utrecht, Netherlands, where he learned a great deal more about conceptual design. Libor exhibited at many Czech and international exhibitions, such as Designblok, the Czech Grand Design

awards, Maison et Objet, Milan and the Vienna Design Week. His interests include current trends and new technologies in product and interior design. His passion for contemporary technology gives his work an additional dimension by including cutting-edge engineering and technology.



# PALAZZO SERBELLONI PLAN



# PALAZZO SERBELLONI CHANDELIERS RENOVATION BY LASVIT

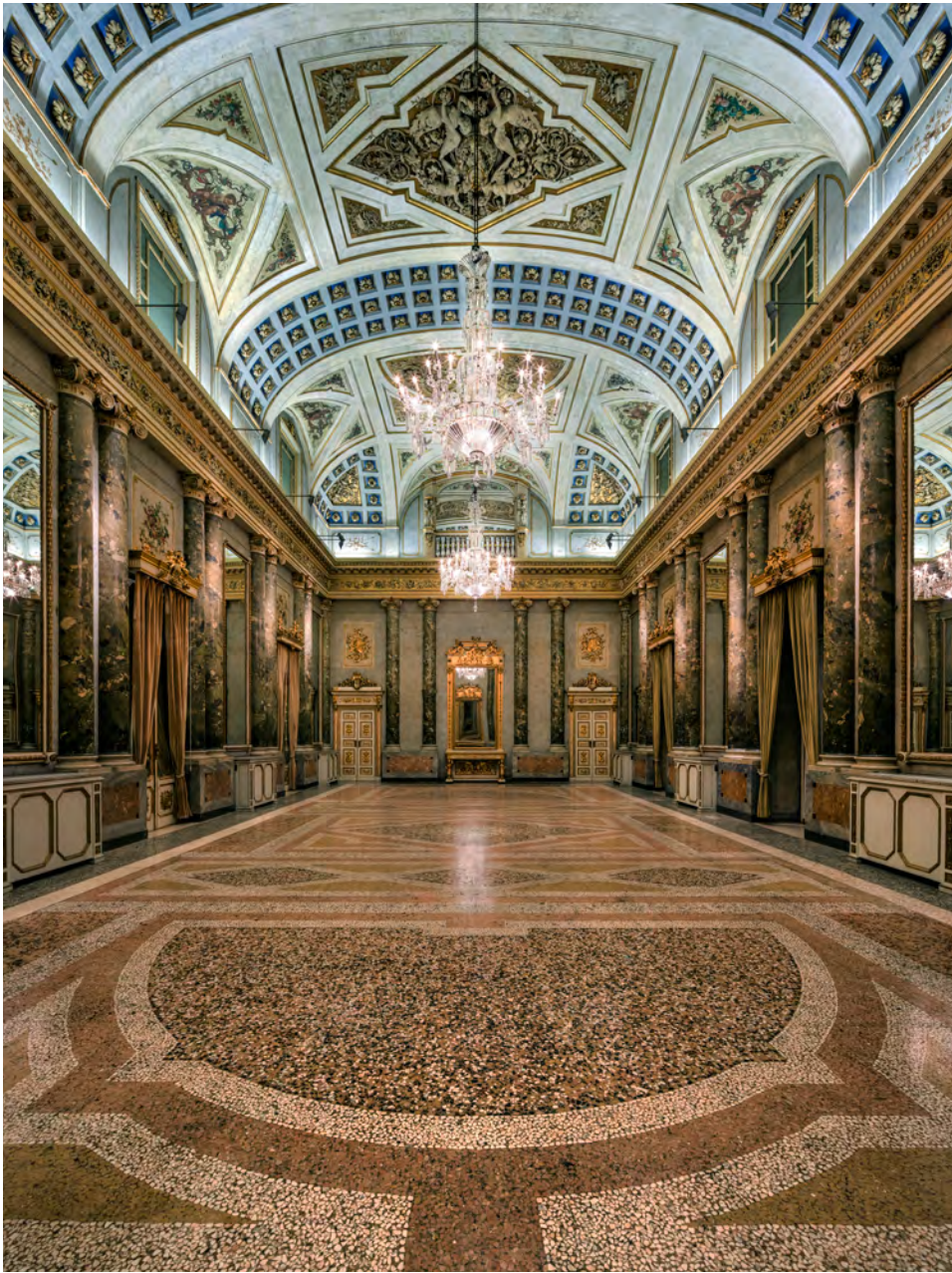
## CRYSTAL CHANDELIERS IN THE NAPOLEONIC WING

The crystal chandeliers found in the staterooms were crafted of Bohemian crystal at the end of the 18<sup>th</sup> century.

Two chandeliers are located in the grand hall, called either Sala Napoleonica or Sala Bonaparte and originally used as a dance and concert hall. Today it hosts private events and fashion shows. Another pair are found in the smaller Sala Gian Galeazzo, having the same design in smaller scale. The four chandeliers are composed of forty various components that have more than 1,000 elements.

The renovation project by Lasvit required a combination of three glassmaking techniques. These included the production and replacement of hand-cut crystal trimmings, hand-blown and cut components, as well as mould – melted and cut glass arms. Yet the overall aim was to sustain as many original components as possible, despite such traces of age as scratches or minor damage. Restorations must always be done with sensitivity and in a manner that preserves their original character. In case of Palazzo Serbelloni, the original crystal components of the chandeliers were dismantled and shipped back to the Czech Republic, where they were probably first made in the late 1700's, completing a historic and creative full-circle.







## DESIGNERS VIA LUCIS 2016



Atelier Oi



Jakub Berdych



Campana Brothers



André Fu Living



Maurizio Galante



Jan Kaplicky



Boris Klimek



Petra Krausova



Arik Levy



Stanislav Libesky



Daniel Libeskind



Michaela Mertlova



Raja Schwahn-Reichmann



Libor Sostak



Patricia Urquiola



Maxim Velcovsky



Moritz Waldemeyer

FLAGSHIP SHOWROOM / PRAGUE  
LASVIT S.R.O.  
Komunardů 32 / Prague 7 / 170 00 / Czech Republic  
T +420 222 362 990 / E lasvit@lasvit.com

---

HEADQUARTERS / NOVÝ BOR / CZECH REPUBLIC  
LASVIT S.R.O.  
Nám. Míru 55 / 473 01 Nový Bor / Czech Republic  
T +420 481 120 810 / E lasvit@lasvit.com

---

SHANGHAI  
LASVIT (China) Co. Ltd.  
Room 906 / 9F / No. 1728 / West Nanjing Rd.  
Shanghai / 200040 / China  
T +86 21 22263206 / E shanghai@lasvit.com  
F +86 21 60100599

---

SINGAPORE  
LASVIT (Singapore) Pte Ltd  
75 Neil Road / 088902 / Singapore  
T +65 6542 9422 / E singapore@lasvit.com

---

HONG KONG  
LASVIT (H.K.) Limited,  
8 Floor / The Hennessy / 256 Hennessy Road / Wanchai  
Hong Kong S.A.R.  
T +852 2866 1234 / E asia@lasvit.com

---

DUBAI  
LASVIT Middle East FZ-LLC  
P.O. Box 333272 / Dubai Design District / Office A109  
Building 6 / Dubai / UAE  
T +971 4453 8689 / E me@lasvit.com

---

MUMBAI  
LASVIT (India) Pvt. Limited  
Regus / Level-2/ Raheja Centre Point  
294 CST Road / Mumbai  
M +91 99 53 73 53 48 / E india@lasvit.com

LOS ANGELES  
LASVIT, Inc.  
28368 Constellation Road / Unit 350 /  
Valencia / CA 91355 / USA  
T +1 661 294 6507 / E america@lasvit.com

---

NEW YORK  
LASVIT, Inc.  
51 Wooster street / Ground floor / New York  
NY 10013 / USA  
T +1 212 219 3043 / E america@lasvit.com

---

MOSCOW  
LASVIT (Russia)  
2 Tverskaya-Yamskaya str. 31/35 / office 611  
Moscow 125047 / Russian Federation  
T +7 965 2166716 / E russia@lasvit.com

---

LONDON  
LASVIT (UK) Limited  
7 Tilney Court / Old Street / London EC1V 9BQ  
United Kingdom  
T +44 20 7490 2004 / E uk@lasvit.com

---

MILAN  
LASVIT (Italy)  
via Gaspare Bugatti 15 / 20144 Milano / Italy  
T +39 02 58108589 / E italy@lasvit.com

---

PARIS  
LASVIT (FR)  
10 rue Saint-Augustin / 75002 Paris / France  
T +33 (0) 7 50 90 78 04 / E france@lasvit.com

---

ASTANA  
LASVIT Representative Office in Central Asia Region  
Kunaev str. 12/1 / office 115 / Astana 010000  
Republic of Kazakhstan  
T +7 776 774 9669 / E kazakhstan@lasvit.com

FLAGSHIP SHOWROOM / PRAGUE  
LASVIT S.R.O.  
Komunardů 32 / Prague 7 / 170 00 / Czech Republic  
T +420 222 362 990 / E lasvit@lasvit.com

---

HEADQUARTERS / NOVÝ BOR / CZECH REPUBLIC  
LASVIT S.R.O.  
Nám. Míru 55 / 473 01 Nový Bor / Czech Republic  
T +420 481 120 810 / E lasvit@lasvit.com

---

SHANGHAI  
LASVIT (China) Co. Ltd.  
Room 906 / 9F / No. 1728 / West Nanjing Rd.  
Shanghai / 200040 / China  
T +86 21 22263206 / E shanghai@lasvit.com  
F +86 21 60100599

---

SINGAPORE  
LASVIT (Singapore) Pte Ltd  
75 Neil Road / 088902 / Singapore  
T +65 6542 9422 / E singapore@lasvit.com

---

HONG KONG  
LASVIT (H.K.) Limited,  
8 Floor / The Hennessy / 256 Hennessy Road / Wanchai  
Hong Kong S.A.R.  
T +852 2866 1234 / E asia@lasvit.com

---

DUBAI  
LASVIT Middle East FZ-LLC  
P.O. Box 333272 / Dubai Design District / Office A109  
Building 6 / Dubai / UAE  
T +971 4453 8689 / E me@lasvit.com

---

MUMBAI  
LASVIT (India) Pvt. Limited  
Regus / Level-2/ Raheja Centre Point  
294 CST Road / Mumbai  
M +91 99 53 73 53 48 / E india@lasvit.com

LOS ANGELES  
LASVIT, Inc.  
28368 Constellation Road / Unit 350 /  
Valencia / CA 91355 / USA  
T +1 661 294 6507 / E america@lasvit.com

---

NEW YORK  
LASVIT, Inc.  
51 Wooster street / Ground floor / New York  
NY 10013 / USA  
T +1 212 219 3043 / E america@lasvit.com

---

MOSCOW  
LASVIT (Russia)  
2 Tverskaya-Yamskaya str. 31/35 / office 611  
Moscow 125047 / Russian Federation  
T +7 965 2166716 / E russia@lasvit.com

---

LONDON  
LASVIT (UK) Limited  
7 Tilney Court / Old Street / London EC1V 9BQ  
United Kingdom  
T +44 20 7490 2004 / E uk@lasvit.com

---

MILAN  
LASVIT (Italy)  
via Gaspare Bugatti 15 / 20144 Milano / Italy  
T +39 02 58108589 / E italy@lasvit.com

---

PARIS  
LASVIT (FR)  
10 rue Saint-Augustin / 75002 Paris / France  
T +33 (0) 7 50 90 78 04 / E france@lasvit.com

---

ASTANA  
LASVIT Representative Office in Central Asia Region  
Kunaev str. 12/1 / office 115 / Astana 010000  
Republic of Kazakhstan  
T +7 776 774 9669 / E kazakhstan@lasvit.com

**Lasvit combines  
the authenticity  
of Bohemian glass  
with unique design,  
craftsmanship  
and innovative  
technologies.**